

The logo for HistoCyte Laboratories is enclosed in a rounded rectangular box with a dark green border. The word "HistoCyte" is written in a dark green, sans-serif font, with the "H" being significantly larger than the other letters. Below it, the word "Laboratories" is written in a lighter green, sans-serif font.

HistoCyte
Laboratories

Quality in Control

Breast Analyte Control
Breast Analyte Control^{DR}

Product Codes:

Breast Analyte Control HCL013, HCL014 and HCL015

Breast Analyte Control^{DR}: HCL016, HCL017 and HCL018

Contents

Breast Analyte Control	2
Breast Analyte Control images: HER2	3
Breast Analyte Control images: ER	4
Breast Analyte Control images: PR	5
Breast Analyte Control ^{DR}	6
Breast Analyte Control ^{DR} images: HER2	7
Breast Analyte Control ^{DR} images: ER	8
Breast Analyte Control ^{DR} images: PR	9



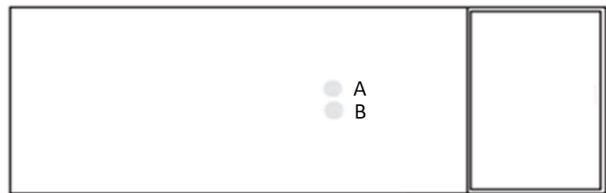
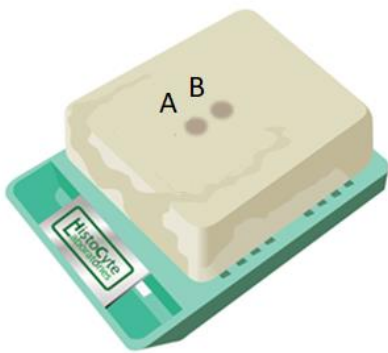
Product Name	Format	Code
Breast Analyte Control (Two cores: negative and positive for HER2, ER and PR)	Slide (2)	HCL013
	Slide (5)	HCL014
	Block	HCL015
Breast Analyte Control ^{DR} (Five cores: variable levels of expression of HER2, ER and PR. Including negative control)	Slide (2)	HCL016
	Slide (5)	HCL017
	Block	HCL018

For Research Use Only

Breast Analyte Control

Breast Analyte Control is a cost effective, simple qualitative control. This product contains two cores that are positive and negative respectively HER2, Estrogen Receptor and Progesterone Receptor.

Breast Analyte Control is available as pre-cut slides (2 slide and 5 slide mailers) and cell microarray blocks.



Cell line	IHC HER2	IHC ER	IHC PR
A: Osteosarcoma	0	Negative	Negative
B : Breast Ductal Carcinoma	3+	Heterogeneously positive	Heterogeneously positive

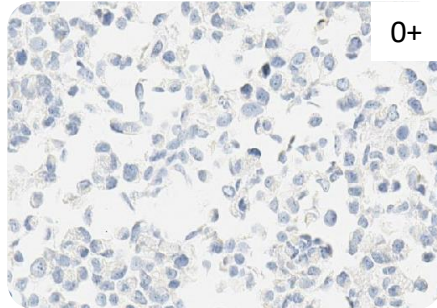
Breast Analyte Control^{DR} HER2

Roche (4B5)

PATHWAY™ anti-HER-2/neu (4B5)
Rabbit Monoclonal Primary Antibody.
Standard protocol as per IFU.

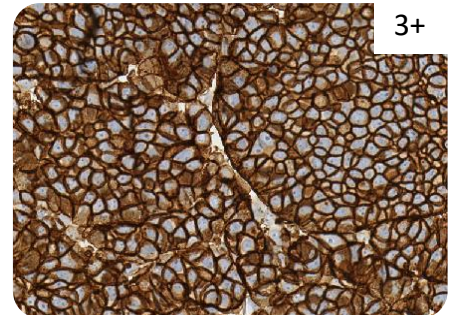
Osteosarcoma

A



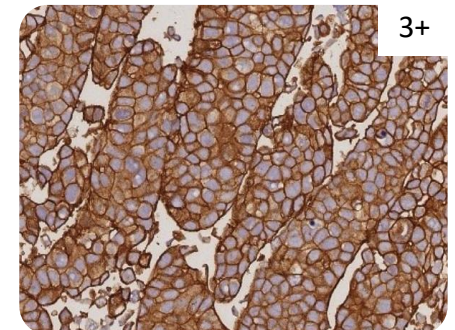
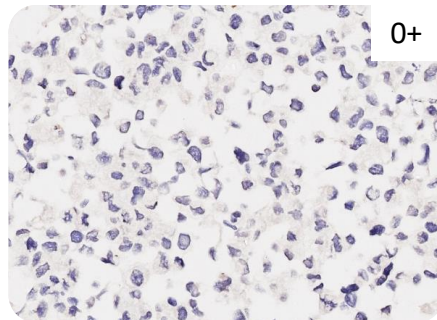
Breast Ductal Carcinoma

B



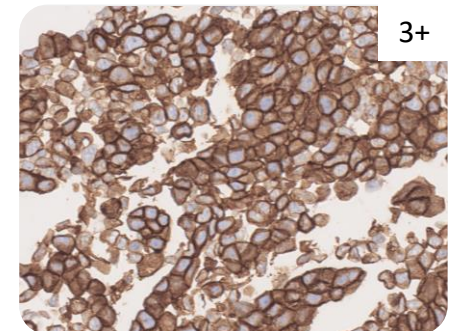
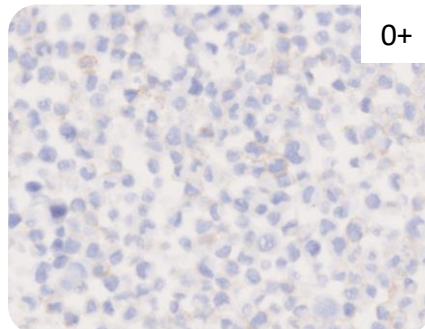
Leica (CB11)

Bond Oracle HER2 IHC System (CB11).
Standard protocol as per IFU (Product Code:TA9145)



Agilent (DG44)

HercepTest™ mAb pharmDx (clone DG44) (Dako Omnis). Standard protocol as per IFU
Product Code: GE001)



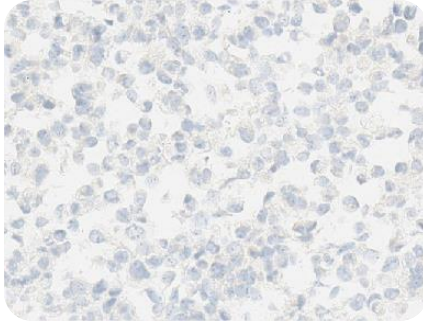
Breast Analyte Control^{DR} ER

Roche (SP1)

CONFIRM anti-Estrogen Receptor (ER) (SP1) Rabbit Monoclonal Primary Antibody. Standard protocol (Product Code: 790-4324)

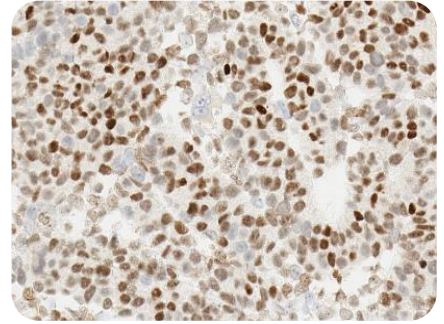
Osteosarcoma

A



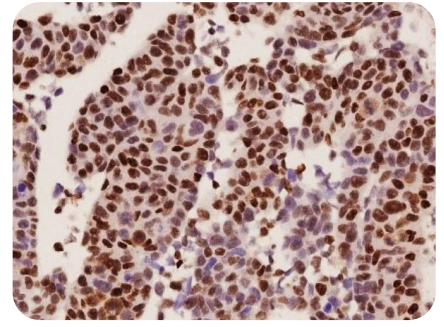
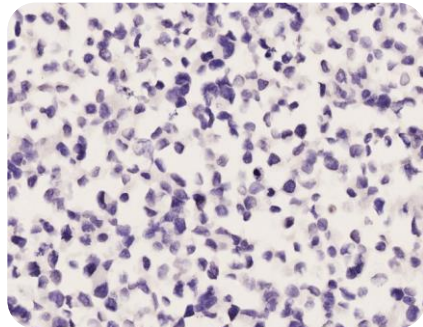
Breast Ductal Carcinoma

B



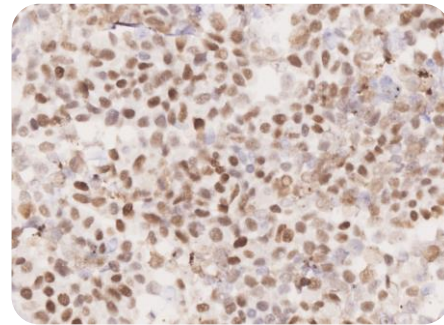
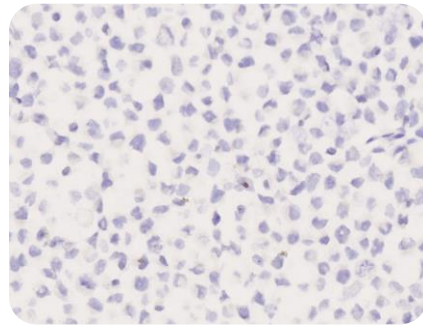
Leica (6F11)

Estrogen Receptor (6F11) Mouse Monoclonal Primary Antibody. Standard protocol. (Product Code: PA0009)



Agilent (EP1)

Estrogen Receptor (EP1) Rabbit Monoclonal Primary Antibody. Standard protocol (GA084)



Breast Analyte Control^{DR} PR

Osteosarcoma

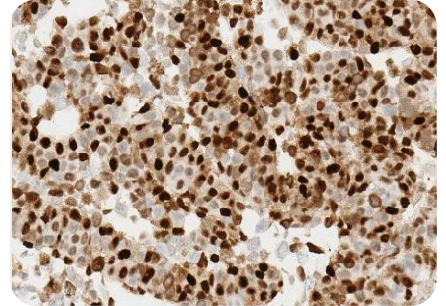
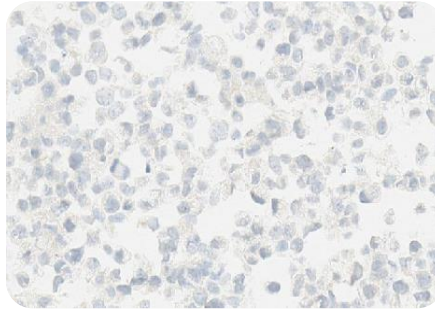
A

Breast Ductal Carcinoma

B

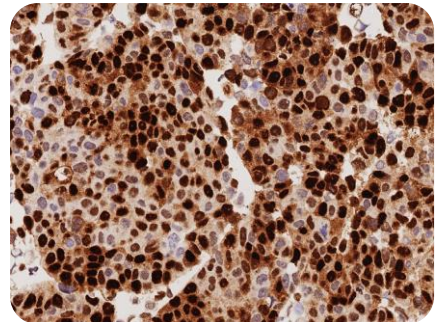
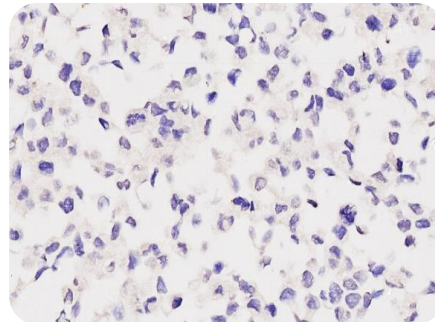
Roche (1E2)

CONFIRM anti-Estrogen Receptor (ER) (SP1) Rabbit Monoclonal Primary Antibody. Standard protocol (Product Code: 790-4324)



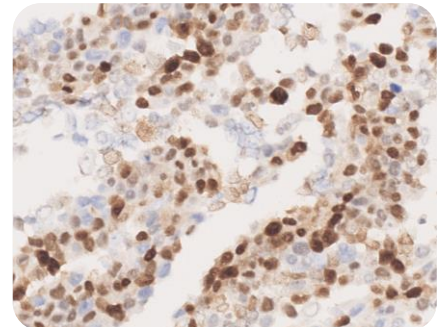
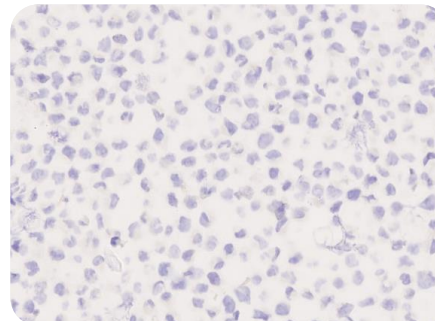
Leica (16)

Progesterone Receptor (16) Mouse Monoclonal Primary Antibody. Standard protocol. (Product Code: PA0312)



Agilent (PR1294)

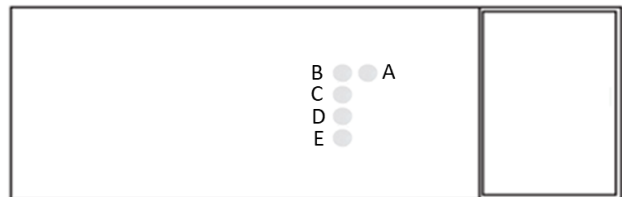
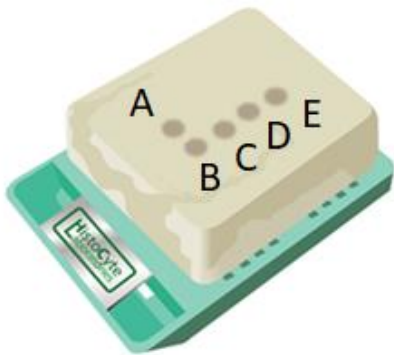
Progesterone Receptor (PR1294) Mouse Monoclonal Primary Antibody. Standard protocol (GA090)



Breast Analyte Control^{DR}

Breast Analyte Control^{DR} is part of the *Dynamic Range* of HistoCyte Products. When a Dynamic Range or a control of high sensitivity is required the **Breast Analyte Control^{DR}** is ideal. This product contains four cells of varying expression for a variety of breast biomarkers, including HER2, Estrogen Receptor and Progesterone Receptor. It also includes an osteosarcoma negative control.

Breast Analyte Control^{DR} is available as pre-cut slides (2 slide and 5 slide mailers) and cell microarray blocks.



Cell line	IHC HER2	IHC ER	IHC PR
A: Osteosarcoma	0	Negative	Negative
B: Breast Adenocarcinoma	0	Homogeneous positive	Heterogeneously positive
C: Breast Ductal Carcinoma	1+	Heterogeneously positive	Homogeneous positive
D: Breast Ductal Carcinoma	1+/2+	Heterogeneously positive	Heterogeneously positive
E: Breast Ductal Carcinoma	3+	Heterogeneously positive	Heterogeneously positive

Breast Analyte Control^{DR} HER2

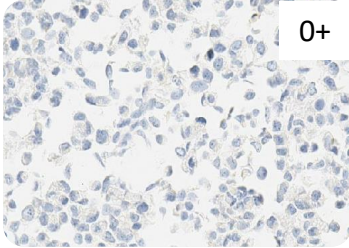
PATHWAY™ anti-HER-2/neu (4B5) Rabbit Monoclonal Primary Antibody. Standard protocol as per IFU.

Bond Oracle HER2 IHC System (CB11). Standard protocol as per IFU)Product Code:TA9145)

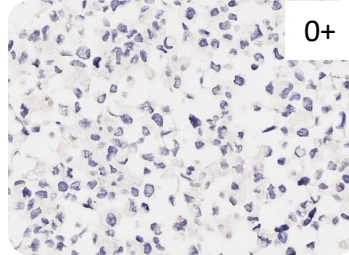
HercepTest™ mAb pharmDx (clone DG44) (Dako Omnis) . Standard protocol as per IFU Product Code: GE001)

A

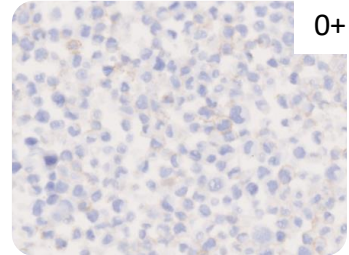
Osteosarcoma



0+



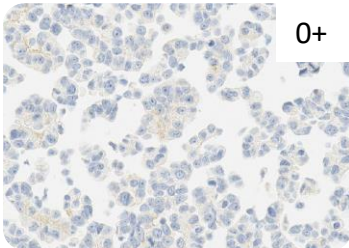
0+



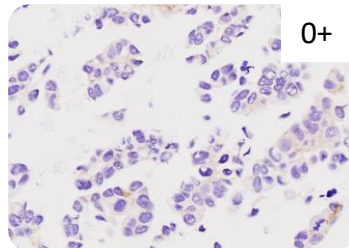
0+

B

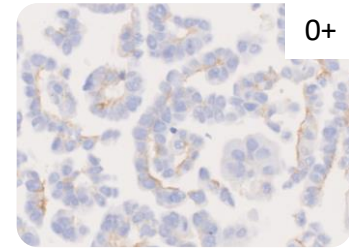
Breast Adenocarcinoma



0+



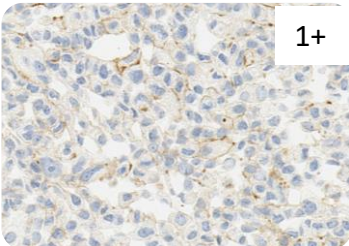
0+



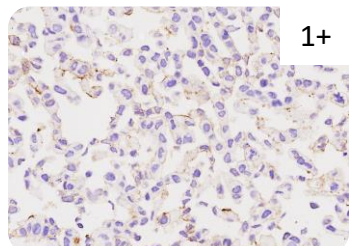
0+

C

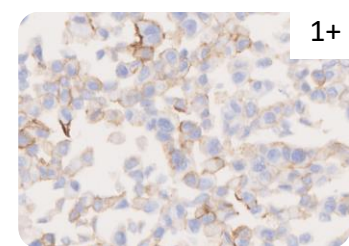
Breast Ductal Carcinoma



1+



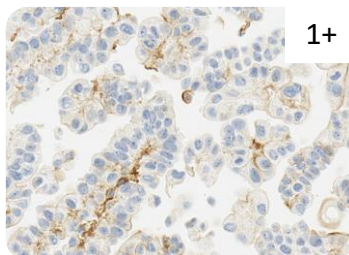
1+



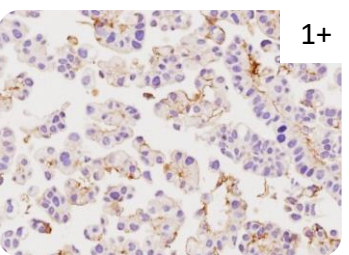
1+

D

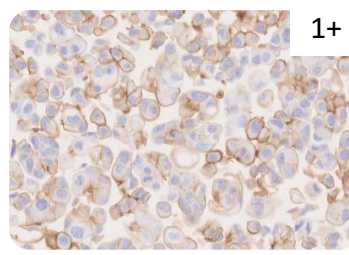
Breast Ductal Carcinoma



1+



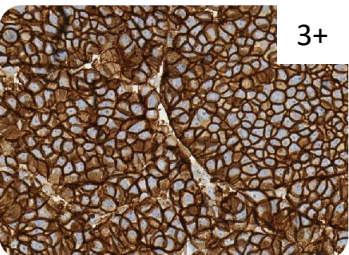
1+



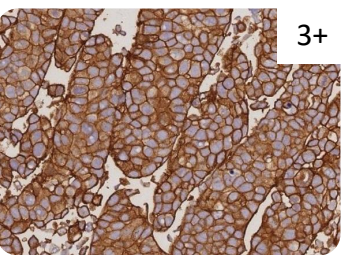
1+

E

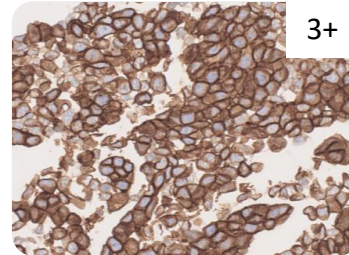
Breast Ductal Carcinoma



3+



3+



3+

Roche (4B5)

Leica (CB11)

Agilent (DG44)

Breast Analyte Control^{DR} ER

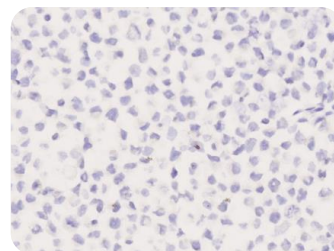
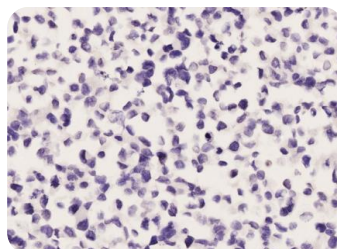
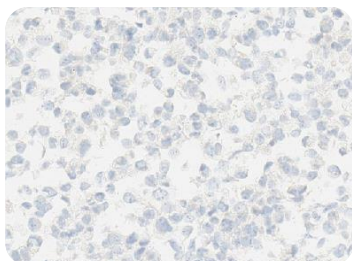
CONFIRM anti-Estrogen Receptor (ER) (SP1) Rabbit Monoclonal Primary Antibody. Standard protocol (Product Code: 790-4324)

Estrogen Receptor (6F11) Mouse Monoclonal Primary Antibody. Standard protocol. (Product Code: PA0009)

Estrogen Receptor (EP1) Rabbit Monoclonal Primary Antibody. Standard protocol (GA084)

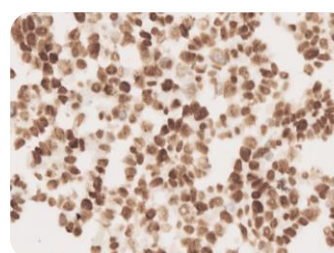
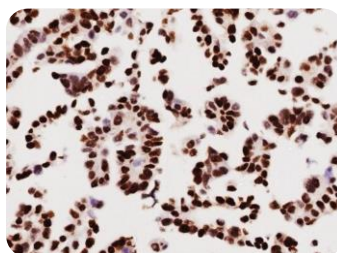
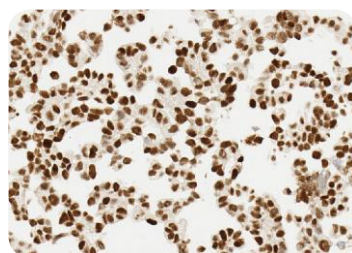
A

Osteosarcoma



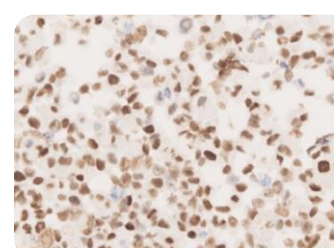
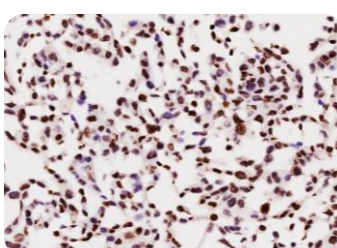
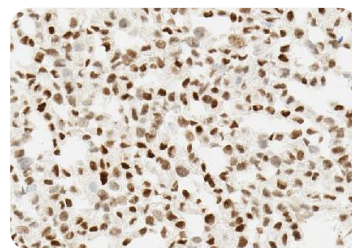
B

Breast Adenocarcinoma



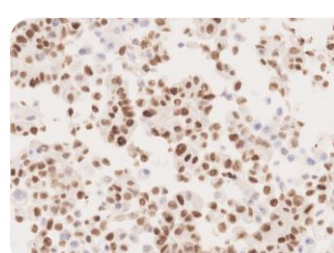
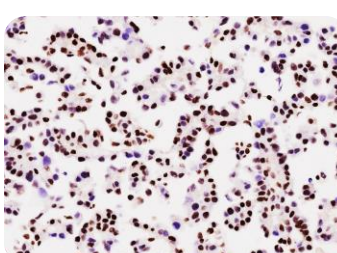
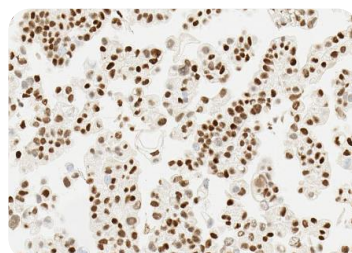
C

Breast Ductal Carcinoma



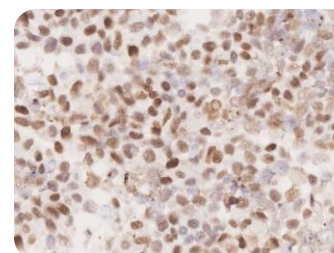
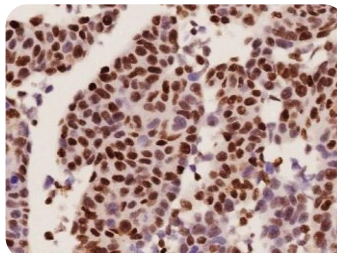
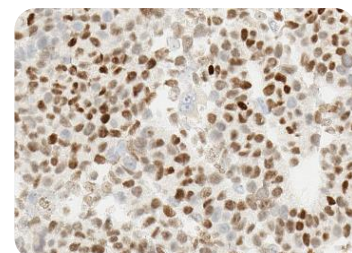
D

Breast Ductal Carcinoma



E

Breast Ductal Carcinoma



Roche (SP1)

Leica (6F11)

Agilent (EP1)

Breast Analyte Control^{DR} PR

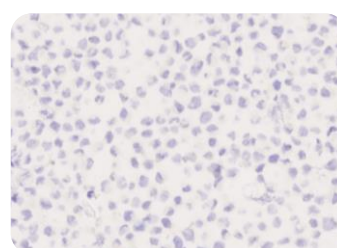
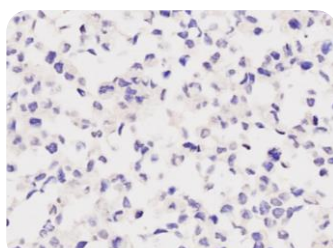
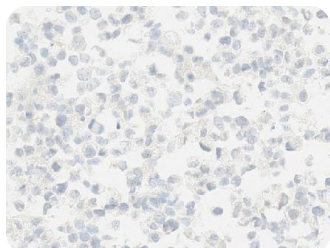
CONFIRM anti-Estrogen Receptor (ER) (SP1)
Rabbit Monoclonal Primary Antibody.
Standard protocol
(Product Code: 790-4324)

Progesterone Receptor (16) Mouse Monoclonal Primary Antibody.
Standard protocol.
(Product Code: PA0312)

Progesterone Receptor (PR1294) Mouse Monoclonal Primary Antibody.
Standard protocol
(GA090)

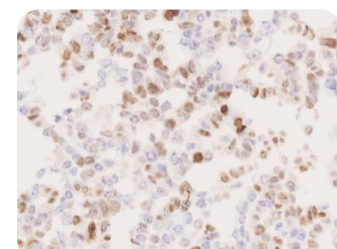
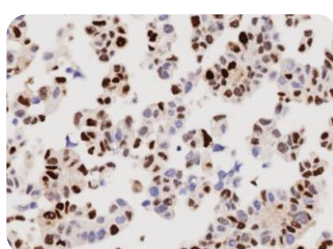
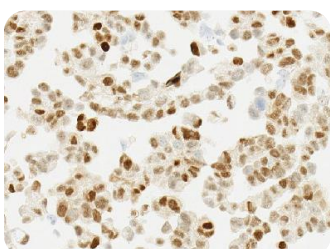
A

Osteosarcoma



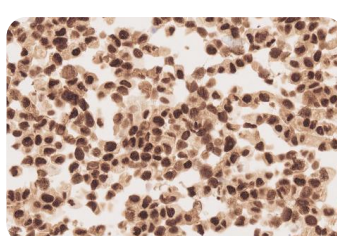
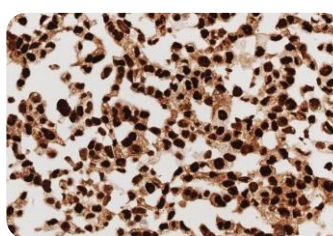
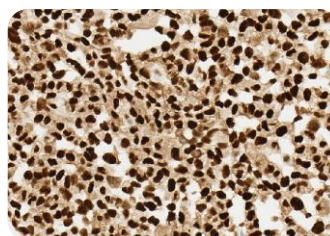
B

Breast Adenocarcinoma



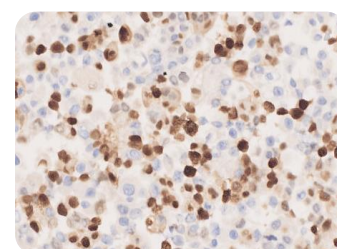
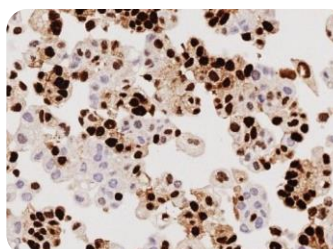
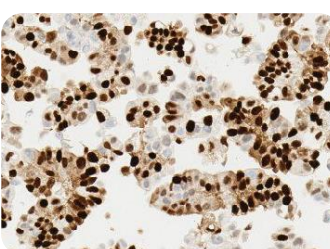
C

Breast Ductal Carcinoma



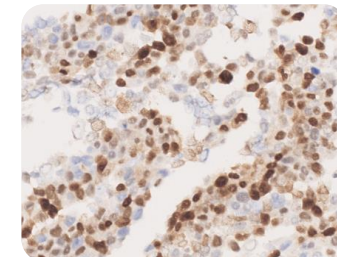
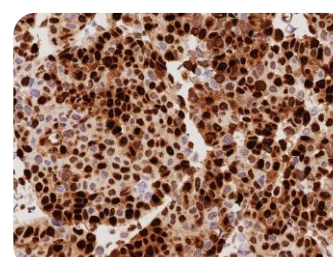
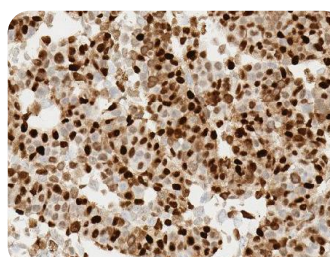
D

Breast Ductal Carcinoma



E

Breast Ductal Carcinoma



Roche (1E2)

Leica (16)

Agilent (PR1294)